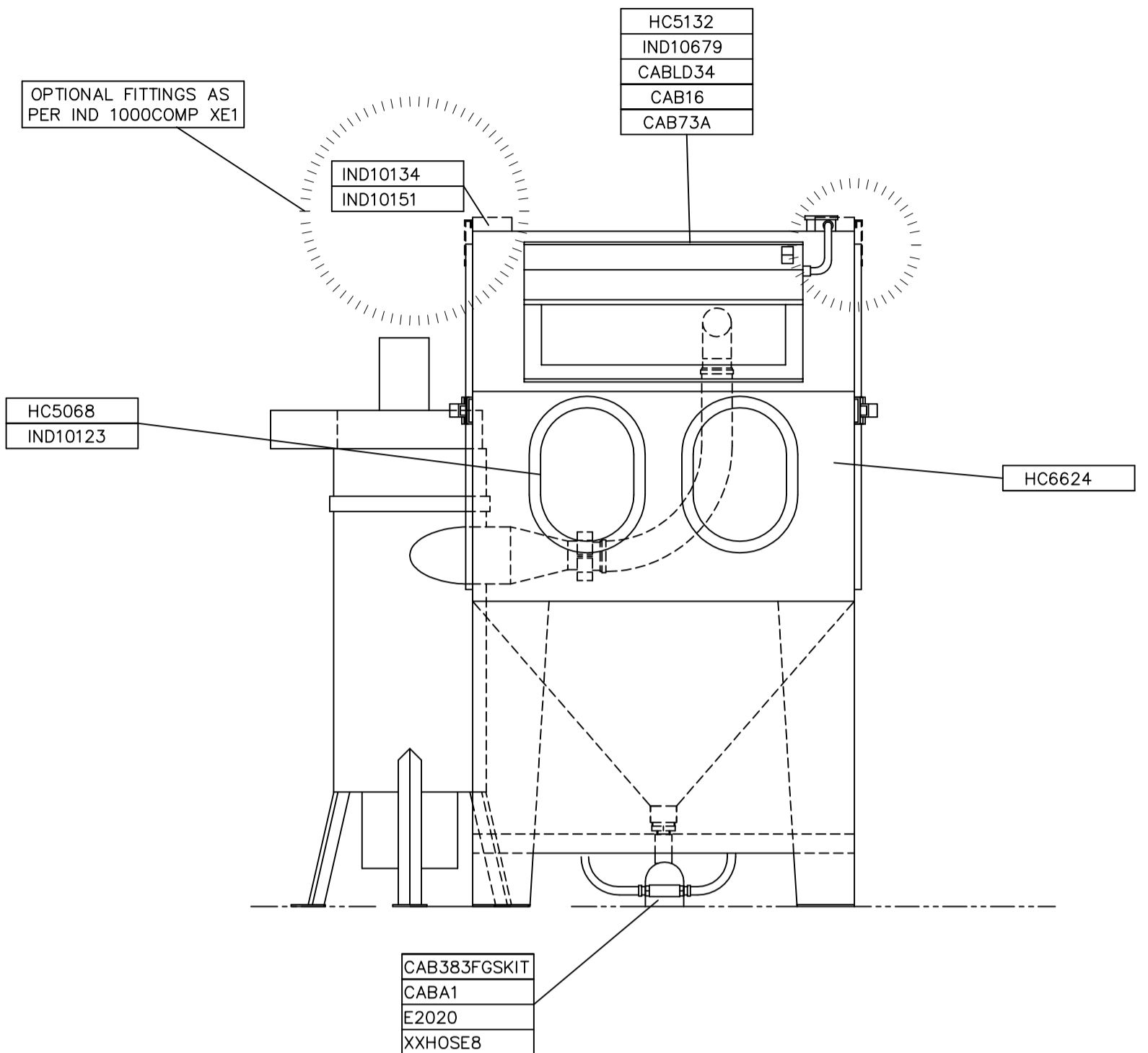
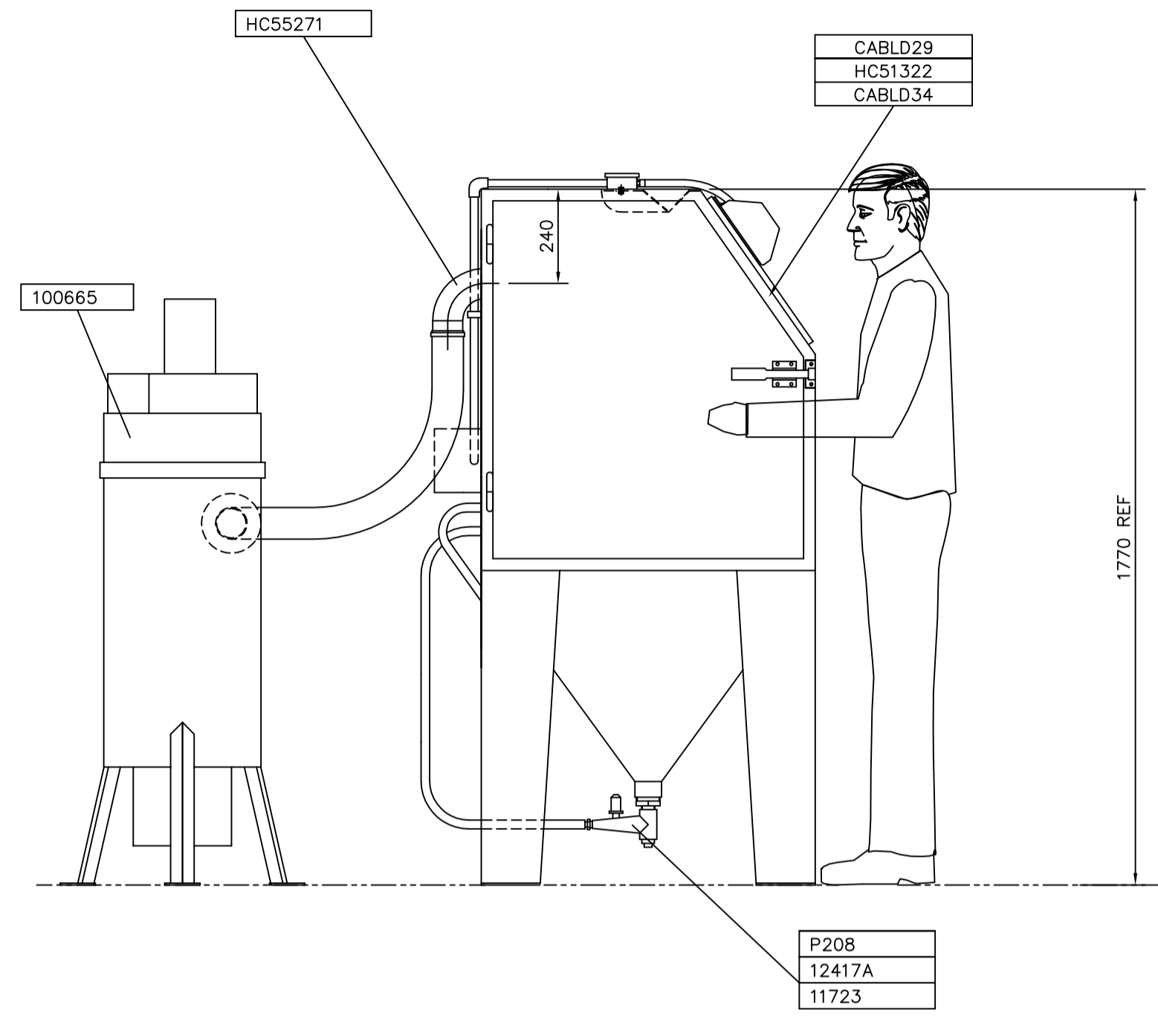


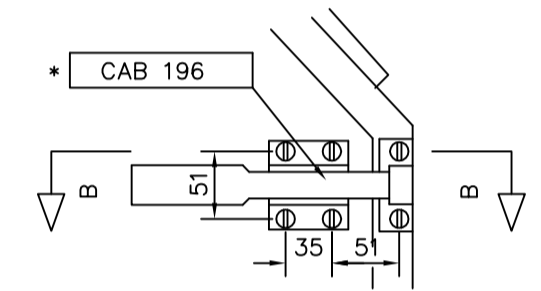
PROD. CODE	DESCRIPTION	PROD. CODE	DESCRIPTION
RM23	ADAPTOR 1/4"x1/4"	100665	DUST COLLECTOR - (0.55 KW, 300 CFM))
XXHOSE7	AIR HOSE 1/4"D BLUE BARE	11723	ZERO-STEEL FITTING SWIVEL
XXHOSE8	AIR HOSE 1/2"D BARE	12417A	VALVE MEDIA METER ASSY *
XXIND10048	HOSE - 1/2" I/D MATERIAL	A16	TAILPIECE 1/4"
XXMESHWW80	MESH-80 MESH/IN x 4FT WIDE	A17	O CLIP 1/2"
		A18	UNION NUT BRASS 1/4"
		BW3	COUPLING 1/2" MALE
OPTIONAL ITEMS			
PROD. CODE	DESCRIPTION	CAB16	LIGHT FITTING
13116	ZERO BLOW OFF NOZZLE - 1/4"	CAB196	LATCH - A2 DRAW STYLE (YELLOW)
PE11023	NIPPLE - 3/8" x 1.4" BRASS	CAB383FGSKIT	SUCTION CABINET FOOT VALVE KIT
IND 10134	INTERLOCK SWITCH - CABINET	CAB73A	ENCLOSURE 80mm x 82mm x 85mm
IND 10151	ZERO INTERLOCK BRACKET L	CABA1	ADAPTOR - 3/8" x 1/2" HOSE
		CABA3	ADAPTOR - 1/2" x 1/2" HOSE
		CABLD29	VIEWING WINDOW - GLASS
		CABLD34A	ANTI ETCH SCREEN (5 PER SET)
		CABLD37	BLAST GATE DAMPER - 3"
		CABLD16800	FILTER/REGULATOR - 1/2"
		CABLD29F	VIEWING WINDOW - GLASS
		CHT3	CABLE TIE
		CPF0021	ELBOW - 1/4" M & F PLATED
		E2020	CLAMP - 1/2" HOSE
		HC5132	LIGHT MODULE FABRICATION
		HC5068	CABINET ARM HOLES - PLASTIC
		HC51322	WINDOW FRAME
		HC55271	SPIGOT - 3" FLANGED x 90 DEG.
		HC6624	1000COMP CABINET FABRICATION
		HOSE20	HOSE - 3" FLEXIBLE RUBBER STD
		IND10123	SLEEVE/GLOVE ASSEMBLY - PAIR
		IND10134	INTERLOCK SWITCH - CABINET
		IND10151	ZERO INTERLOCK BRACKET L
		IND10159	SILENCER - 1/2"
		IND10218	DUCT COUPLER - 3" MALE
		IND10679A, B & C	PUSH-BUTTON ASSEMBLY DOUBLE
		IND10890	CONTROL PANEL - 0.75KW W/ISOL.
		IND10954	GROMMET - 19mm BORE
		JC3	HOSE CLIP WORM DRIVE 70 - 89
		KB11	PRESSURE GAUGE
		MP1	VALVE 1/2" BALL VALVE
		MP1411	ELBOW - 1/2" M/F
		MP148X	WATER SEP/AIR FILTER - 1/2"
		MP15	NIPPLE - 1/2" M/M
		MP23	TEE - 1/2" M/M
		P208	NIPPLE - 2" x 1" M.I.
		RCAMV4	BULKHEAD ADAPTOR - 1/4" C/W NUT
		RCAMV9	ADAPTOR - 1/4" x 1/8" BR.



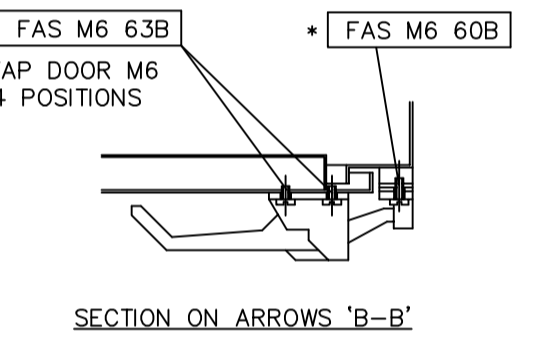
FRONT VIEW



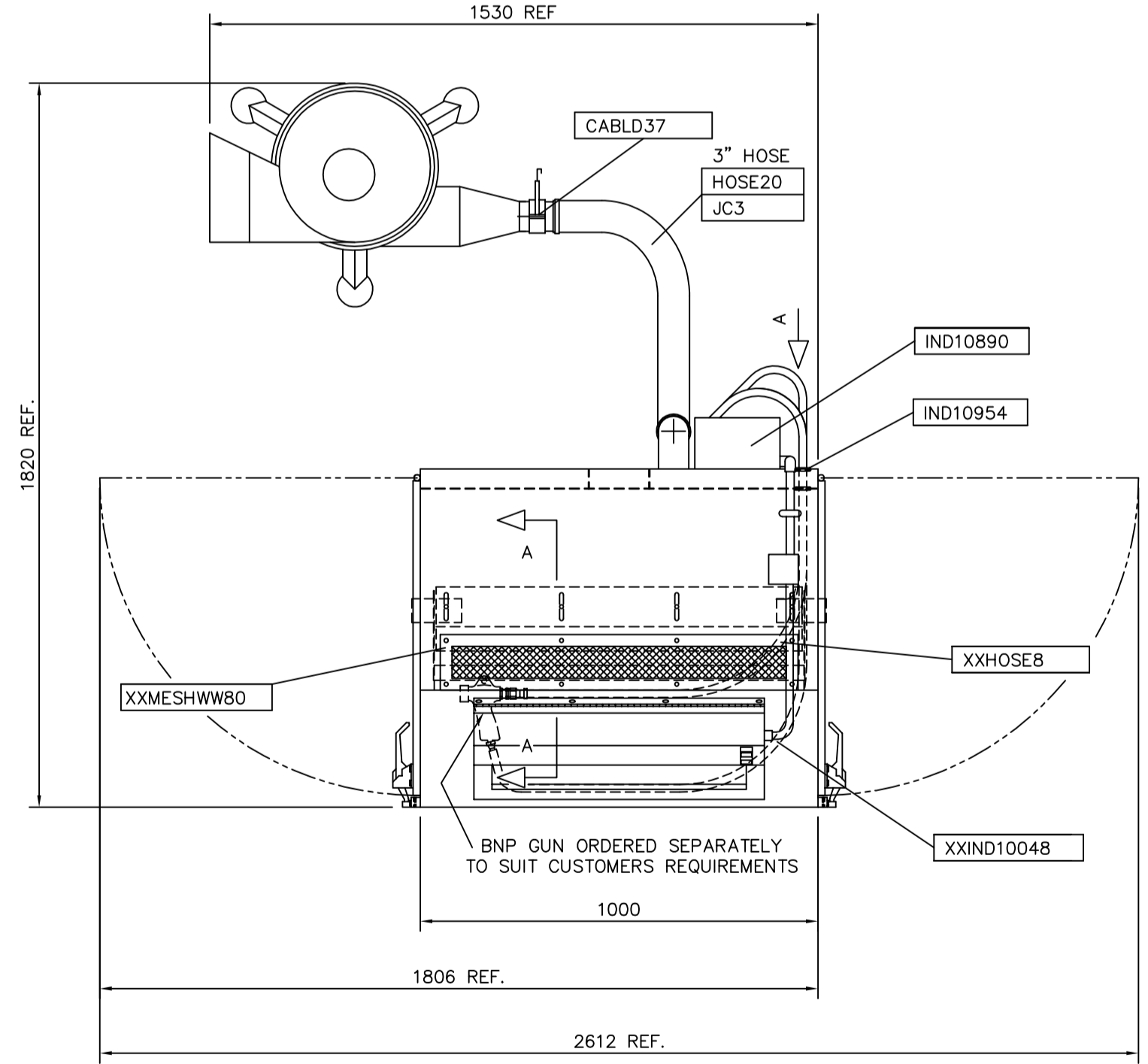
SIDE VIEW



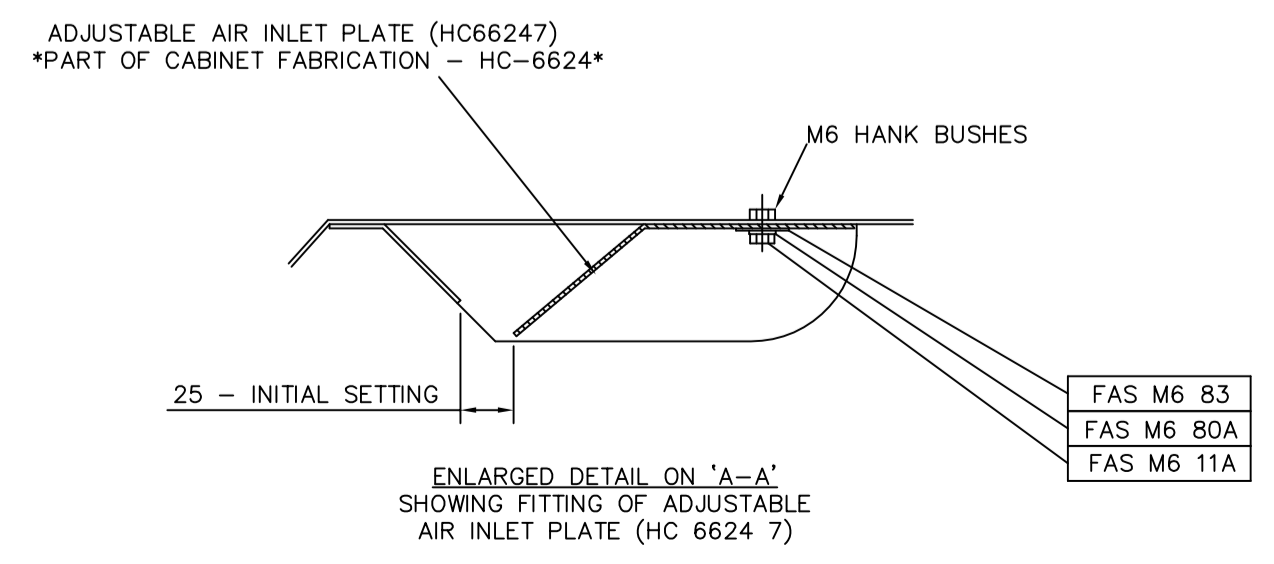
ENLARGED VIEW SHOWING HANDLE



SECTION ON ARROWS 'B-B'



PLAN VIEW



ENLARGED DETAIL ON 'A-A' SHOWING FITTING OF ADJUSTABLE AIR INLET PLATE (HC 6624 7)

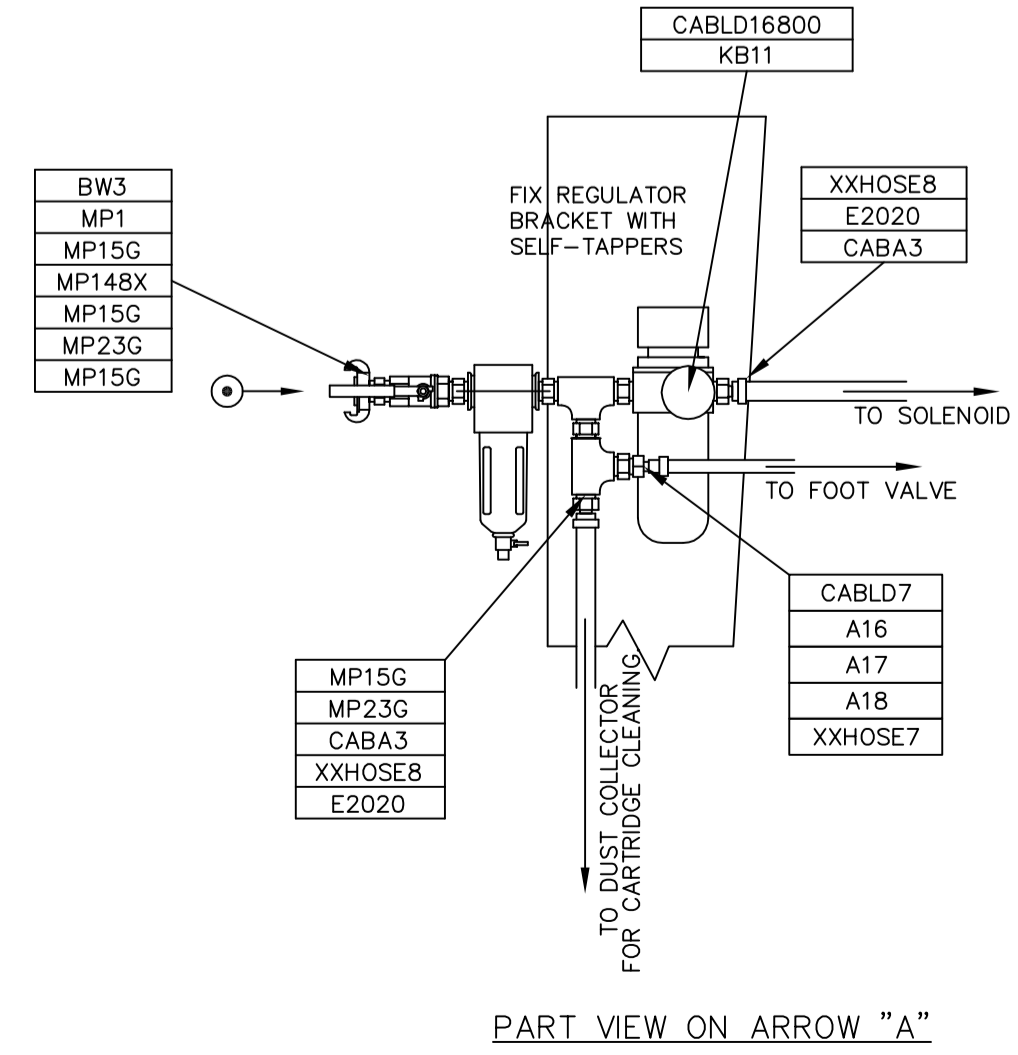
**ELECTRICAL REQUIREMENTS**  
 FAN MOTOR - 0.55 KW ~ 415 V / 3 PH / 50 Hz - 1.5A FLC ~ 3 PHASE  
 FAN MOTOR - 0.55 KW ~ 230 V / 1 PH / 50 Hz - 5.5A FLC ~ SINGLE PHASE  
 LIGHT MODULE - 36 W ( 2 x 18 W ) ~ 240 V / 1 PH / 50 Hz  
 SOLENOID VALVE ~ 240 V / 1 PH / 50 Hz (IND 1000COMP XE1)

**AIR REQUIREMENTS**  
 AIR SUPPLY ~ 80 PSI - CONSUMPTION AT 80 PSI  
 5/16" JET = 33 CFM

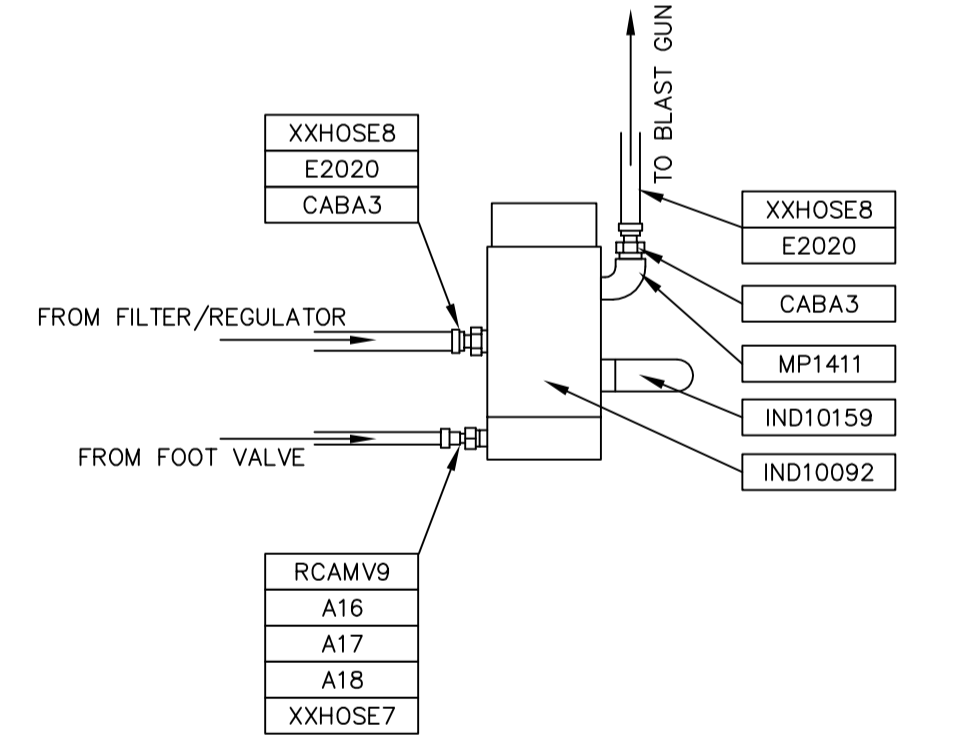
**PAINT SPECIFICATION**  
 CLEMCO PREP & PAINT SPEC. GREEN - RAL6003

**REFERENCE DRAWINGS**  
 FOR ELECTRICAL DIAGRAM SEE HC-5414  
 FOR PNEUMATIC DIAGRAM SEE HC-3118

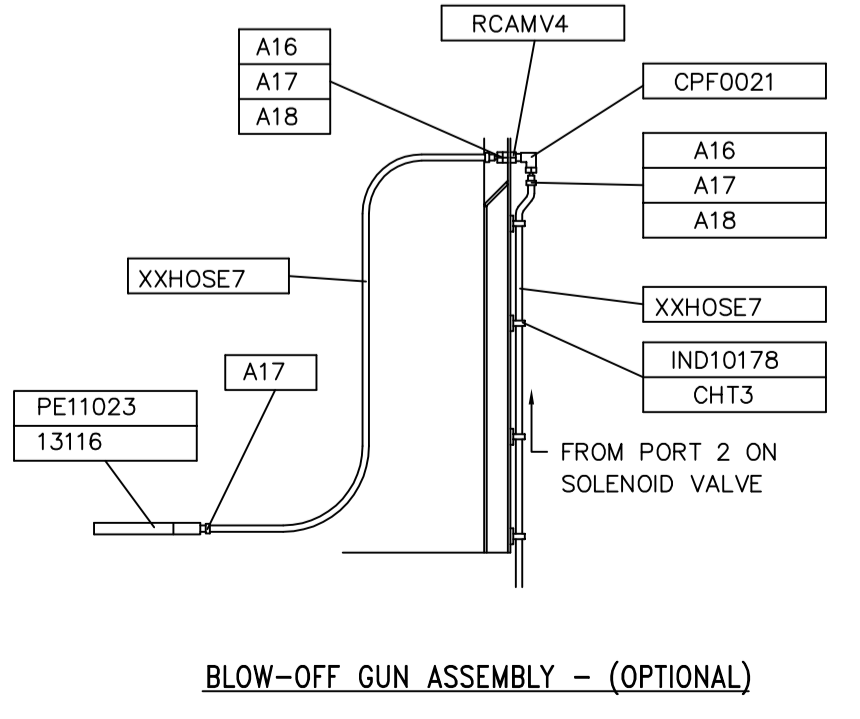
**TECHNICAL SPECIFICATION**  
 1. NOMINAL WORK CHAMBER SIZE = 1000(W) x 800(D) x 950(H)  
 2. MAXIMUM WORKTABLE CAPACITY = 100 KG  
 3. MINIMUM INTERIOR ILLUMINATION = 500 LUX.  
 4. BLOW-OFF GUN SUPPLIED OPTIONAL.  
 5. AIR REGULATOR/WATER SEPARATOR SUPPLIED AS STANDARD  
 6. 6 mm THK CLEAR POLISHED GEORGIAN WIRED GLASS TO BS 952 VIEWING WINDOW.  
 7. SAFETY DOOR INTERLOCKS OPTIONAL.



PART VIEW ON ARROW 'A'



SOLENOID ASSEMBLY (PART OF CAB383FGSKIT)



BLOW-OFF GUN ASSEMBLY - (OPTIONAL)

ISSUE No	MOD. No	DRAWN	CHECKED	DATE
4	4972	A.M.		28.05.2013
3	4145	A.M.		13.07.2004
2	3328	A.M.		03.05.2000
1	ORIGINAL	A.M.		04.01.2000

**GENERAL NOTES**

- 1) MATERIAL: COLD ROLLED MILD STEEL SHEET TO BS 1449 GRADE CR4 OR EQUIVALENT; HOT ROLLED MILD STEEL SECTIONS TO BS 4360 GRADE 43A OR EQUIVALENT. FINISH: SELF-COLOUR FOR PAINTING.
- 2) REMOVE ALL SHARP EDGES AND BURRS.
- 3) JOINTS AND CONSTRUCTION TO SUIT MANUFACTURERS' STANDARD PROCESSES.
- 4) DIMENSIONS AND TOLERANCES TO BS 308.
- 5) MACHINED SURFACES UNLESS STATED.
- 6) THREADS TO BS 3643 6H/6g OR BS 21 UNLESS STATED.
- 7) \*
- 8) \*
- 9) \*

**WELDING**

WELDING GENERALLY TO BS 5135 CAT. C & BS 4872 PT. 1 ALL JOINTS & CONNECTIONS OF R.S. SECTIONS CONTINUOUS PLATE TO R.S. SECTION INTERMITTENT 75 WELD 100 GAP

PLATE THICKNESS	1.6; 2.2.5; 3	5; 6; 8; 10	12	PLATE OVER 12
WELD SIZE	3	6	10	AS SPECIFIED

	TOLERANCES	
	FABRICATION	MACHINING
HOLE CENTRES	±1mm	±0.25mm
DIAMETER	±3mm	±0.25mm
ANGULAR	±1°	±0.5°
LINEAR	±3mm	±0.5mm

**COPYRIGHT**

THIS DOCUMENT IS THE PRIVATE & CONFIDENTIAL PROPERTY OF HODGE CLEMCO LIMITED & MUST NOT BE REPRODUCED OR DISCLOSED TO ANY THIRD PARTY WITHOUT PRIOR WRITTEN CONSENT OF THE AFOREMENTIONED COMPANY.

**HODGE CLEMCO LTD**  
 HODGE CLEMCO LIMITED,  
 ORGREAVE DRIVE,  
 SHEFFIELD,  
 S13 9NR.  
 TEL. 0114 2540600  
 FAX. 0114 2540250

<b>DO NOT SCALE - IF IN DOUBT ASK</b>			
TITLE <b>G.A. IND 1000COMP XE SERIES SUCTION CABINET SYSTEM</b>			
CUSTOMER		STOCK	
DRAWN A.M.	DATE 04.01.2000	DIMENSION MM	SCALE 1:15
DRAWING No <b>HC-6645</b>			SIZE A1